



- 1—JACK KAULAHOA and His
Hawaiian Trio—Omaha, Neb.
2—GEORGE R. PATRICK
Composer and soloist—Milwaukee, Wis.
3—GEORGE W. RUSSELL, Jr.
Charles Sansone and his Stanley Dance
Orchestra—Philadelphia, Pa.
4—EDWARD I. GIBBS
Orpheum Dance Palace—New York City.

- 5—MARTIN BENSON
Hotel Adelphia Orchestra—Phila., Pa.
6—CARL STRITZEL
Night Hawks Orch.—Wheeling, W. Va.
7—DICK KONTER
Byrd Polar Expeditions — North and
South Poles.



MASTERBILT FRETTED INSTRUMENTS

"First Choice of the Stars"

EPIPHONE BANJO CORPORATION

Musical Instrument Builders since 1873

LONG ISLAND CITY, N. Y.

Sold by

C. G. CONN, LTD.
45 Branford Place
Rm. 222 Newark, N. J.

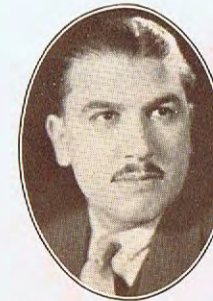


1. **JACK MARGOLIN**
Branford Theatre, Newark, N. J.
2. **FRED CUNDARI**
Prominent Broadcasting Artist, Newark, N. J.
3. **LOU TORNILLO**
With B. A. Rolfe Orchestra, Newark N. J.
4. **GEORGE MITTLER**
Music Director, Newark, N. J.
5. **EMIL ALEXANDER**
Broadcasting Artist, New York City.

6. **"CHICO"**
Featured radio guitar artist, Station WAAT.
7. **NEWT MOSS**
Guitarist and teacher, Hartford, Conn.
8. **MAX NISSEN**
With Cy Yaffe's Orchestra, Hartford, Conn.
9. **CLIFF PASCARELLA**
Paramount Theatre, New Haven, Conn.



EPI A. STATHOPOULO
President and General Manager



O. A. STATHOPOULO
Vice-President and Treasurer

A PERSONAL MESSAGE

MANY times I have been asked where I obtained my knowledge of fretted instruments. I might answer that question briefly by saying three through sources: Inheritance, environment and my own unceasing efforts.

For three generations my ancestors have been engaged exclusively in the production of stringed instruments. My father, Anastasios Stathopoulos, who was a violin maker and Luthier of note, started in business for himself in 1873 as a producer of fine fretted instruments, and it was from him — the founder — that the present officers of the company learned the art. It is only natural that my brothers and myself should follow family tradition and carry on the business he established.

Ever since I can remember I have loved music devotedly. This, together with an innate desire to build beautiful things, acted as an incentive in my efforts to create fretted instruments of superlative quality. To accomplish my purpose I studied the laws of acoustics and delved into the history of stringed instruments while acquiring technical skill through practical experience.

In developing Epiphone instruments to their present perfection I have been ably assisted by my brothers, Orpheus A. Stathopoulos, who is vice-president and treasurer of the company, and Frixo Nicols Stathopoulos, an orchestra director, who at present is acting as the head of our professional relations department.

I also wish to take advantage of this opportunity to thank the thousands of Epiphone players for their patronage, their hearty cooperation and splendid testimonials, as well as to assure those who are interested in fretted instruments that we shall, in the future as in the past, do everything within our power to deserve the confidence placed in us.

Sincerely yours,

EPI A. STATHOPOULO.



F. N. STATHOPOULO
Professional Relations



GEORGE H. MANN
Sales Manager

"The Choice of the Stars"



MASTERBILT Fretted Instruments

THE selection of any musical instruments should be made only after careful consideration of two vital points:

1. What experience, measured in years of individual craftsmanship, lies behind the product?
2. How well is the product made?

The unsurpassed perfection of the present Epiphone Masterbilt instruments is due to the cumulative life's work of three generations of music craftsmen. Each minute part of these fine fretted products is the result of years of research and test under all kinds of conditions. The Epiphone instruments of today represent world renowned success, principally on account of the tone values and harmony infused into Epiphone products down through the years.

How well is the product made? Any discussion of manufacturing must necessarily include *raw materials, design, equipment, and supervision.*

Material: Only the finest imported and domestic materials are used in the construction of Epiphone instruments. The woods are carefully selected, thoroughly and scientifically seasoned before being accepted at the factory. Metal parts are rigidly inspected by experts, both at the beginning and end of every operation. Any part that shows the least imperfection is discarded.

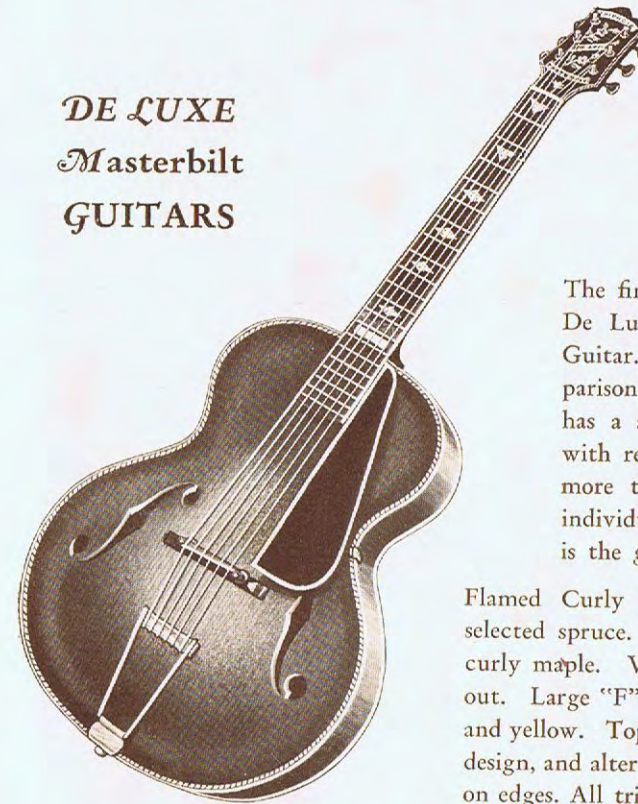
Design: Epiphone products are acclaimed the world over as the most correctly designed fretted instruments in existence. One of the outstanding Epiphone features is the "carved" sounding and resonance boards. Like the Stradivarius violins, the tops and backs of each Epiphone are individually carved from a block of solid wood and scientifically graduated, thus achieving the quality and true tone balance so essential for fine musical results. All Epiphone Masterbilt orchestral guitars, mandolins and mandolas, regardless of price, are carved. Other commendable features of the Epiphone orchestral guitars are the neck, which joins the body at the 14th fret, the accurate rosewood oval finger board, adjustable bridge, extension tailpiece and guard plate.

Equipment: The Epiphone factory is one of the most modern in the United States. It is equipped with the finest machinery and precision instruments that skill and artistry can devise.

Supervision: Talented supervision of all operations in the Epiphone plant is the secret of Epiphone success. Ever since the first instrument was made, direct control of every process has been in the capable hands of one of the Stathopoulos family, original artisans and designers of fretted instruments as we know them today.



DE LUXE Masterbilt GUITARS



For Those
Who Want
The Best

The finest of all Epiphones is this De Luxe, Grand Auditorium size Guitar. Resplendent above comparison, this brilliant instrument has a sweetness of tone combined with resonant power which affords more than ample opportunity for individual expression. Truly, this is the *genius* of instruments.

Flamed Curly Maple. "Carved" top of selected spruce. "Carved" back of flamed curly maple. Violin construction throughout. Large "F" holes. Shaded light brown and yellow. Top inlaid with black and white design, and alternate ivory and black binding on edges. All trimmings gold plated. \$275



CARL KRESS

CARL KRESS

Well known composer and artist featured by Paul Whiteman and heard on Chesterfield, Chase and Sanborn and other prominent radio "Hours".—Newark, N. J.

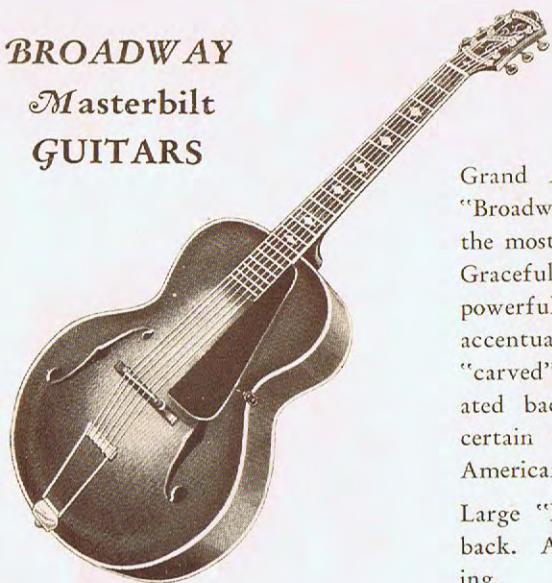


DICK McDONOUGH

DICK McDONOUGH

One of New York's most liked artists. Playing on many prominent "Hours" on the air.

**BROADWAY
Masterbilt
GUITARS**



*A Very
Popular
Model*

Grand Auditorium size, this beautiful "Broadway" Epiphone Guitar is probably the most popular instrument of its type. Gracefully designed in appearance, its powerfully deep, scintillating tone is accentuated by the special Epiphone "carved" top and correspondingly graduated back. A beautiful instrument—certain to enhance the finest playing. American Walnut.

Large "F" holes, sunburst on top and back. Alternating ivory and black binding. \$175

The extended neck of all Epiphone Masterbilt Guitars joins the body at the 14th fret. All models have adjustable bridge, modern extension tailpiece and guard plate.



TITO SCHIPA

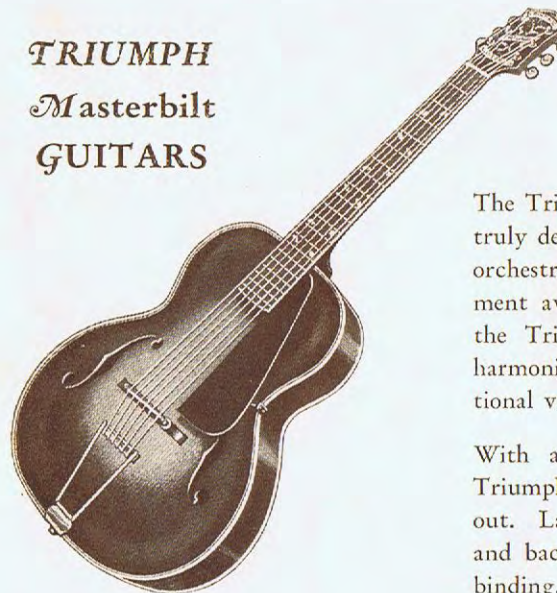
Superfluous to express this great artist's talents. Metropolitan opera star—New York.



MIKE POVOROMO

Formerly with Larry Funk and playing with many prominent "name" orchestras. Now with Enric Madriguera—Commodore Hotel and RKO time.

**TRIUMPH
Masterbilt
GUITARS**



*A Great
Orchestral
Favorite*

The Triumph Guitar, Auditorium size, is truly described by its name. For general orchestral work, there is no other instrument available which can compare with the Triumph for quality of tone and harmonious interpretation. It has exceptional volume and depth. Fancy walnut.

With a "carved" top of spruce, the Triumph has violin construction throughout. Large "F" holes. Sunburst on top and back. Alternating ivory and black binding. \$125

All models of Masterbilt Guitars have oval finger boards of genuine South American Rosewood. The smooth, rounded frets facilitate execution and are easy on the fingers.



HAROLD STOKES

Orchestra Leader NBC Staff—Chicago.

EARLE ROBERTS

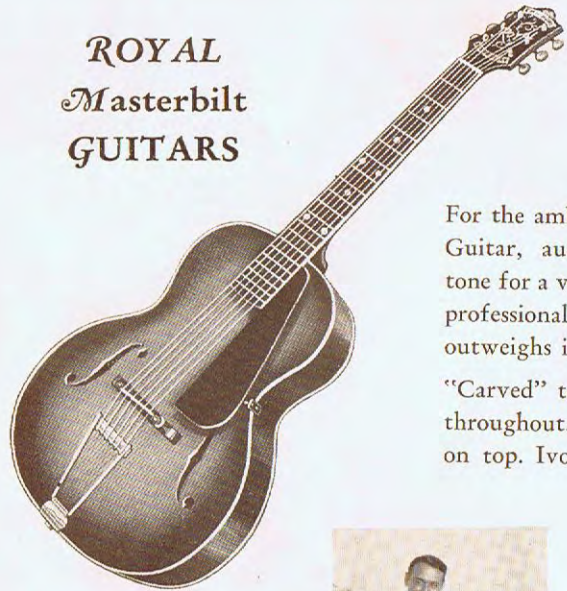
Well known Guitarist—Banjoist NBC Staff—Chicago.



IRENE and HAROLD STOKES

Famous "Rolling Stones" vaudeville team. RKO time.

**ROYAL
Masterbilt
GUITARS**



*A Splendid
Professional
Instrument*

For the ambitious artist, the Royal Epiphone Guitar, auditorium size, offers wonderful tone for a very small investment. A superior professional instrument, whose quality far outweighs its price. Mahogany.

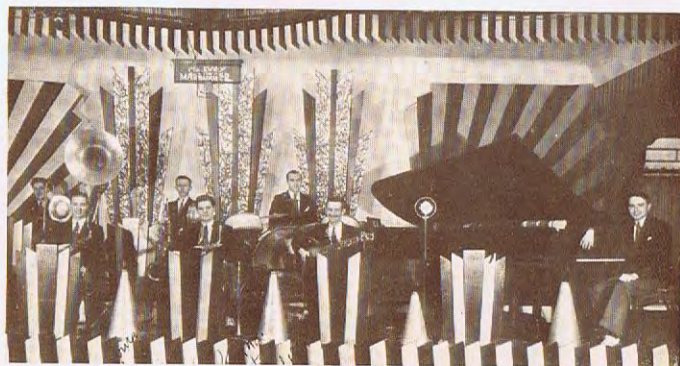
"Carved" top of spruce, violin construction throughout. Golden brown finish, sunburst on top. Ivory binding. **\$85**

The sounding boards and backs of all Epiphone Guitars are carved from a solid block of thoroughly seasoned wood and properly graduated to insure correct balance and uniform quality.



DON ROMEO
Sherbo's Continentals—New York.

Metal parts are carefully inspected at the beginning and end of each operation. Direct control of every process is under the supervision of one of the Stathopoulos family.



HARVEY MARBURGER
Guitarist and Director of his own orchestra. Famous for his dance music. Reading, Pa.

**BLACKSTONE
Masterbilt
GUITARS**



*Grand Concert
Fine Tone
Large Volume*

This instrument is specially built for those who desire a fine quality of tone along with large volume, yet an easy action instrument of medium size. The BLACKSTONE model fulfills this ideal.

This model is in grand concert size (a size between the concert and the auditorium). Its sides and back are made of maple with top of spruce. The top is carved in the same manner as in a violin.

It is finished in full ebony black with Ivorine edges on the body, thereby accentuating the entire instrument. The contrast of brilliant nickel further enhances the beauty of the lustrous body. **\$70**

Talented supervision of all operations is the secret of Epiphone success. Direct control of every process is in the capable hands of one of the Stathopoulos family.



CHARLES COVERT
Featured guitarist—Trenton, N. J.

The Epiphones of today represent the highest development of fretted instruments, due to the tone value and harmony infused into them through three generations.



CHARLES KOFF
Well known for his rhythm and arrangements—Wilkes Barre, Pa.



BILL BARFORD
With Fred Waring's Orchestra—New York.



L. H. ROBERTSON
Jack Linx's Orchestra—Birmingham, Ala.

**ZENITH
Masterbilt
GUITARS**



*Concert Size
Fine Tone and
Beautiful Finish*

For general concert work, this Epiphone Zenith Guitar stands supreme. This is a moderately priced instrument with superlative tone. Concert size, it is beautifully finished in American Maple.

"Carved" top of spruce, violin construction throughout. Dark cherry finish, sunburst on top. Ivorine edges. \$50

The tone of the Epiphone guitar has body and timbre. It will sustain vibrations with almost unbelievable power. Like a rare old violin, its tone improves with age.



FRANK D'AMATO
Instructor and radio artist—
New Haven, Conn.

All Epiphone guitars, regardless of price, have carved tops and backs, extended finger board, adjustable bridge, patented tailpiece and guard plate.



GENE RADEMACHER
Radio artist—Chicago, Ill.

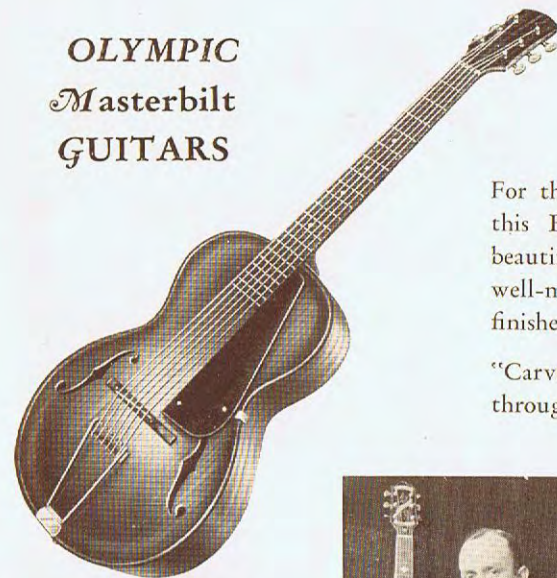


BRUCE "JUNIE" ANDERSON
With Eddie Duchin's Orchestra
—New York.



TED SIMONELLI
Featured radio artist and
composer—Boston, Mass.

**OLYMPIC
Masterbilt
GUITARS**



*An Excellent
Low Priced
Instrument*

For the person who cannot afford more, this Epiphone Masterbilt Guitar offers beautifully blended tone in a thoroughly well-made instrument. Concert size, finished in fine mahogany.

"Carved" spruce top, violin construction throughout. Dark, orange-brown finish. \$30



"DOLLY" GRAY
Featured radio guitarist with
WKBF Orchestra—Indianapolis,
Indiana.



DON CARDUCCI
Soloist and instructor—
Jersey City, N. J.



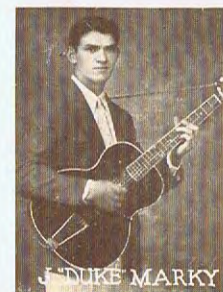
ARTHUR ENDS
Well known guitarist and radio
player—Newark, N. J.



GEORGE GRANT
Guitar soloist—Chicago, Ill.



KING HARVEY
With Art Randall's Orchestra
—Omaha, Nebr.



J. "DUKE" MARKY
Soloist and teacher—
Trenton, N. J.



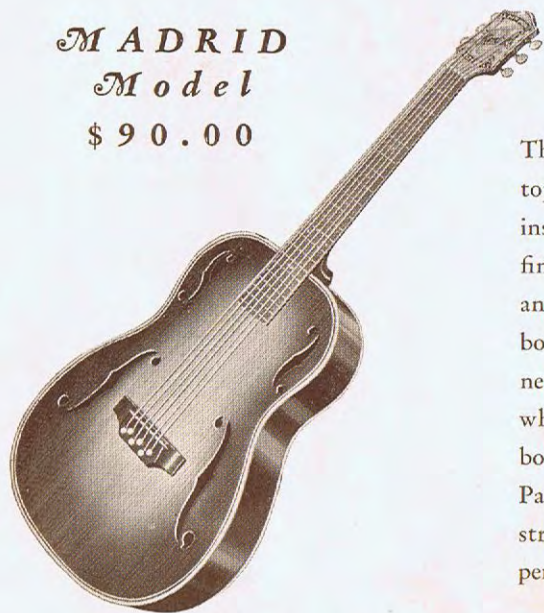
SPANISH TYPE GUITARS

THESE instruments are produced for those who desire a guitar with flat top and back for conventional Spanish Guitar playing. The brilliant treble with resonant depth, make these instruments ideal for the soloist. They are so constructed to produce the particular tone most desirable in a guitar of this type.

HAWAIIAN STYLE GUITARS

These guitars are so made that they can be converted into Hawaiian style guitars by use of a high nut. They are admirable instruments for this purpose.

MADRID
Model
\$90.00



MADRID MODEL

The sides and back are of curly maple; top of fine selected spruce; the whole instrument shaded into a rich brown finish. The edges of the top are black and white ivorine, the bottom is also bound with single heavy ivorine. The neck is constructed with patented truss which prevents warping. Accurate finger board of rosewood bound with ivorine. Patented machine heads of durable construction and new type of bridge for perfect intonation.

\$90.00

NAVARRRE MODEL

Sides and back of African mahogany; top of selected spruce. Both top and bottom edges are bound with ivorine. Entire instrument is finished in English brown, a rich color with subdued tones. The mahogany neck, reinforced with patented truss, insures perfect alignment. Finger board of rosewood, tested for accuracy. Patent machines of sturdy construction and easy tuning. Modern type of glued bridge for perfect intonation.

\$50.00



- 1—Babe Egan's "Hollywood Redheads"
—MISS BILLY FARLEY
Featured guitarist and singer—Featured in the capitals of Europe.
- 2—GENE MACE
Banjo and guitar soloist—Cleveland, Ohio.
- 3—CLYDE M. FAITH
The Collegiate Imps—Pittsburgh, Pa.
- 4—RALPH COLICCHIO
Lucky Strike WEAFF—New York.

- 5—SAMMY FRIEDMAN
Balaban and Katz Circuit—Chicago.
- 6—TONY SACCO
Red Nicols' Orchestra—Detroit, Mich.
- 7—KEN HARVEY
Anatole Friedland's Review—Milwaukee, Wis.
- 8—RED PLUMMER
Horace Heidt's Orchestra—New York.



MASTERBILT "TENOR GUITARS"

EPIPHONE'S guitar supremacy is exemplified in these Tenor (or Plectrum) guitars. Artists everywhere have learned to appreciate the resonant tone coupled with the genuine guitar depth which makes these instruments ideal for the banjo player.

The same care and design, selection of materials, and craftsmanship which are so integral a part of Epiphone's other products are embodied in these beautiful Tenor Guitars.

All Tenor Models can be had in Plectrum Guitar on order at no extra charge.

BRETTON
Model
\$ 175.00



BEVERLEY
Model
\$ 30.00



MASTERBILT "TENOR GUITARS"

THE EMPIRE

Here indeed is the auditorium size Tenor Guitar which meets all requirements and satisfies the most ideal desires. The Empire Masterbilt Tenor Guitar gives real depth of tone and at the same time has a sparkling resonance that appeals to all, and is similar in finish and appearance to the De Luxe Guitar.

Imported spruce carved top and imported curly maple throughout in its violin construction, both graduated to produce depth and volume. Golden brown finish, top inlaid with black and white design and alternate ivory and black binding on edges and trimmings gold plated. Large "F" holes, adjustable bridges and elevated pick guards.
\$250.00

THE BRETTON

A magnificent instrument, auditorium in size, with all features of the finest in tone and similar in construction to our Broadway Guitar. Walnut, top of spruce, violin construction throughout. Large "F" holes. Sunburst on top and beautifully shaded. Alternate ivory and black binding on edges. \$175.00

THE HOLLYWOOD

Auditorium size. Fancy walnut, carved top of spruce. Violin construction throughout. Large "F" holes. Sunburst on top and beautifully shaded. Alternate ivory and black binding on edges. \$125.00

THE REGENT

Auditorium size. Mahogany, carved top of spruce, violin construction throughout, golden brown finish, ivory binding on edges. \$85.00

THE MELODY

Concert size. Maple, dark cherry finish, violin type back, carved spruce top, finished with sunburst. Ivory bindings on edges. \$50.00

THE BEVERLEY

Standard size. Mahogany. Violin type back. Flat spruce top. Rounded edges. \$30.00

MASTERBILT MANDOLINS

THE age-old romance of mandolin music appeals to all types of people everywhere. The brilliant singing tone and full low notes of Epiphone Mandolins are known the world over. Truly emblematic of Epiphone craftsmanship, Masterbilt Mandolins are enthusiastically acclaimed in every part of the universe.

All Models Have "F" Holes, Adjustable Bridges, and Pick Guards.

THE WINDSOR

The Windsor Masterbilt Mandolin is the popular professional instrument. Its beautiful appearance is surpassed only by its magnificent tone. Particularly for concert work, the Windsor is the most preferred mandolin.

Sides and back imported curly maple, carved top of spruce, violin construction throughout. Top inlaid with black and white block design and alternate multiple black and white ivory binding on edges. All trimmings gold plated. \$150.00

STRAND Model



THE STRAND

The Strand Masterbilt Mandolin in Walnut, has ever been popular for general professional work. Its beautiful appearance and captivating tone will enhance any ensemble.

"Carved" top of spruce, violin construction throughout. Beautifully shaded and with yellow sunburst on top. Alternate black and white multiple binding on edges. \$75.00

THE RIVOLI

A professional instrument with all the qualities of the better instruments, but simpler of lines. Made of Walnut with "carved" top of spruce, violin construction throughout. Shaded sunburst on top, alternate black and white ivory binding on edges. \$50.00

ADELPHI Model



THE ADELPHI

Truly a music value. This Adelphi Masterbilt Violin is the selection of those discriminating music lovers who cannot afford a larger investment. Its full low notes and marvelous tone scale are worthy of a far higher priced instrument. Maple sides and back.

"Carved" top of spruce. Violin construction throughout. Dark cherry finish, sunburst on top. Ivory binding on edges. \$35.00

MANDOLAS

Because of their greater resonance and their deep, lingering tones, Epiphone Masterbilt Mandolas are chosen by many in place of mandolins. All Epiphone Mandolas blend marvelously with the human voice, guitar or piano. It is ideal for solo playing, radio, vaudeville and the home.

Windsor Mandola	\$200.00
Strand Mandola	110.00
Rivoli Mandola	75.00
Adelphi Mandola	50.00

Epiphone Mandolas are the same in construction and finish as the corresponding models of Masterbilt Mandolins.

MANDO CELLOS

No. 1. Similar to Blackstone Guitar	\$ 85.00
No. 2. Similar to Triumph Guitar	150.00
No. 3. Similar to DeLuxe Guitar	275.00





FRETTED INSTRUMENTS

HOW TO JUDGE THEM

TONE, intonation, tuning, appearance, ease of playing, and construction are the most important things to be considered in judging a fretted instrument.

The tone should have beauty, brilliance, resonance, volume, power without distortion, and balance. Some instruments sound well when you are playing them, but may lack resonance or carrying power; therefore, it is advisable to have somebody else also play it while you listen from a distance.

Accuracy in placing the frets is the secret of correct tuning. A good way to test the tuning is by playing chords on various parts of the finger board, from top to bottom. Notice whether the keys turn easily, without binding or slipping.

The finish and decorations should not only beautify the instrument, but act as protection as well. For this purpose several coats of durable, waterproof material must be properly applied. The body and neck should be bound to protect the edges. Dark colors with shaded finish are preferred by the most prominent performers.

Ease of playing consists of a combination of several things. First of which is instant response to every desired effect. The neck should fit the hand and join the body at the 14th fret. Smooth, rounded frets of the exact height are absolutely essential for rapid execution.

You can tell something of the construction by careful examination, but in a finished instrument it is impossible to see how well it is built inside; therefore, you have to depend considerably on the reputation and reliability of the manufacturer.

Epiphones, in addition to their superb musical qualities, are correctly, conscientiously and scientifically constructed. The carved resonance and sounding board has created such a favorable impression that makers of cheaper products are trying to foster sales by using such phrases as "carved type", "arched violin type", "violin type construction" or "simulated carved". Do not confuse these with the genuine carved instruments, as most of them are pressed into shape or made of veneer. The neck of every Epiphone is dove-tailed into a block in the body and reinforced in a manner that precludes any possibility of pulling out or warping. In fact, the entire instrument is put together to withstand the effects of constant strain, as well as adverse climatic and atmospheric conditions.

The tone, intonation, tuning, symmetry of design, beauty of finish, ease of playing, and sturdy construction of Epiphone instruments have been enthusiastically acclaimed by the most discriminating artists. If you could visit our factory and see for yourself how Epiphones are made, we feel confident you would readily understand why we guarantee the material, workmanship and intonation for the life of the instrument, also what has caused Epiphones to be:

"First Choice of the Artists"



- 1—**JOHN M. TAIT**
Composer and teacher—Brooklyn, N. Y.
- 2—**PAT SAMMARCO**
With Venetian Orchestra—Enroute.
- 3—**ALBERT J. THOMAS**
Soloist—Pittsburgh, Pa.
- 4—**CHAS. GALLANT**
Rose Gardens Orchestra—B'klyn, N. Y.

- 5—**DARREL CAULKER**
Dan Bigelow's Broadcasting Orchestra—
New York.
- 6—**JOSEPH SOUZA**
Art Landry's Orchestra—Enroute.
- 7—**WILLIAM VAN FECHTMAN**
Banjo Virtuoso—Pittsburgh, Pa.
- 8—**GEORGE BUTTKUS**
St. Paul Symphony Orchestra—St. Paul,
Minn.



The Strings with the Golden Tone

These strings are made in gauges specially suitable for modern orchestral playing, and will improve the tone of any guitar on which they are used. Made of Swedish chrome steel and covered with special alloy non-tarnish bronze. Powerful—Resonant and Durable.

GUITAR STRINGS

	Ball Ends	Each	Dozen	Gross
E or 1ststeel	\$.10	\$1.20	\$12.00
B or 2ndsteel	.10	1.20	12.00
B or 2ndwound	.15	1.70	17.00
G or 3rdsteel	.10	1.20	12.00
G or 3rdwound	.15	1.80	19.00
D or 4thwound	.20	2.00	20.00
A or 5thwound	.25	2.40	24.00
E or 6thwound	.30	3.50	35.00
Set of Six	\$1.10		

TENOR (AND PLECTRUM) GUITAR STRINGS

	Ball Ends	Each	Dozen	Gross
A or 1ststeel	\$.10	\$1.20	\$12.00
D or 2ndsteel	.10	1.20	12.00
G or 3rdwound	.15	1.75	19.00
C or 4thwound	.15	1.75	20.00
Set of Four	\$.50		

MANDOLIN STRINGS

	Loop Ends—Silk Tufted	Each	Dozen	Gross
E or 1ststeel	\$.10	\$1.20	\$12.00
A or 2ndsteel	.10	1.20	12.00
D or 3rdwound	.15	1.80	18.00
G or 4thwound	.15	1.80	18.00
Set of Eight	\$1.00		

MANDOLA STRINGS

	Loop Ends—Silk Tufted	Each	Dozen	Gross
A or 1ststeel	\$.10	\$1.20	\$12.00
D or 2ndwound	.15	1.70	17.00
G or 3rdwound	.20	2.20	22.00
C or 4thwound	.25	2.50	25.00
Set of Eight	\$1.40		

HAWAIIAN GUITAR STRINGS

	Ball Ends	Each	Dozen	Gross
E or 1ststeel	\$.10	\$1.20	\$12.00
C# or 2ndsteel	.10	1.20	12.00
A or 3rdsteel	.10	1.20	12.00
E or 4thwound	.20	2.00	20.00
A or 5thwound	.25	2.40	24.00
E or 6thwound	.30	3.50	35.00
Set of Six	\$1.05		

TENOR (AND PLECTRUM) BANJO STRINGS

	Loop Ends—Silk Tufted	Each	Dozen	Gross
A or 1ststeel	\$.10	\$1.20	\$12.00
D or 2ndsteel	.10	1.20	12.00
G or 3rdwound	.15	1.80	18.00
C or 4thwound	.20	2.20	20.00
Set of Four	\$.55		

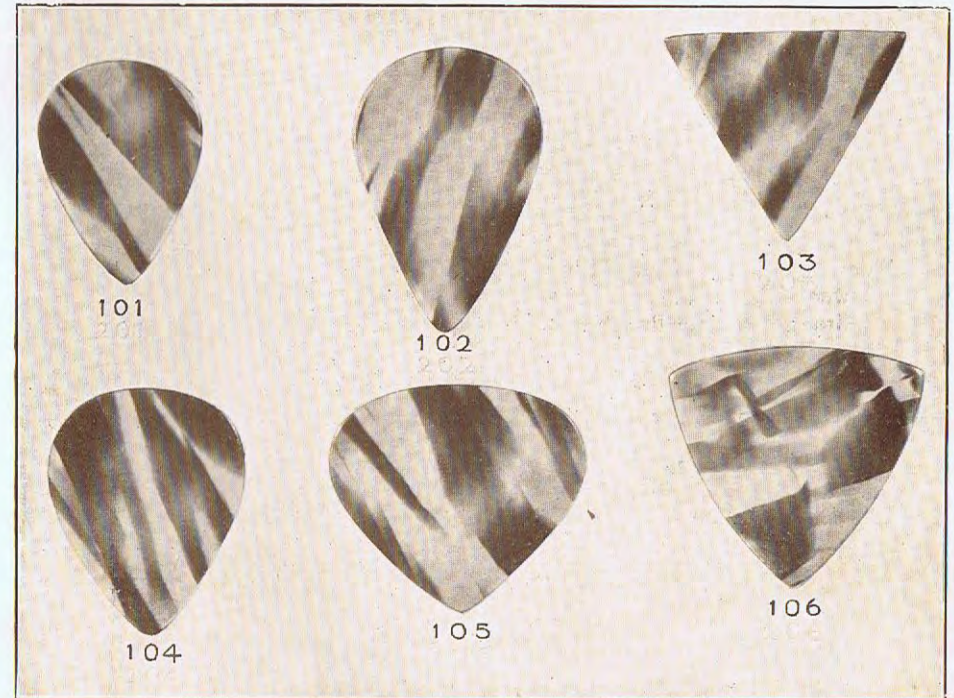
MANDO-CELLO STRINGS

	Loop Ends—Silk Tufted	Each	Dozen	Gross
A or 1stwound	\$.20	\$1.80	\$18.00
D or 2ndwound	.25	2.80	28.00
G or 3rdwound	.35	3.50	35.00
C or 4thwound	.50	4.80	48.00
Set of Eight	\$2.60		

Epiphone Masterbilt Strings are the Choice of Many of the Foremost Artists.

GUITAR PICKS

THESE six popular styles of guitar picks (illustrated actual size) are furnished both in genuine tortoise shell and finest grade celluloid. They are hand made with smoothly polished beveled edges. Uniform in size and quality.



	Each	Doz.		Each	Doz.
No. 101—Tortoise Shell	\$.25	\$2.50	No. 104—Tortoise Shell	\$.30	\$3.00
No. 201—Finest Celluloid	.05	.50	No. 204—Finest Celluloid	.05	.50
No. 102—Tortoise Shell	.30	3.00	No. 105—Tortoise Shell	.35	4.00
No. 202—Finest Celluloid	.05	.50	No. 205—Finest Celluloid	.10	1.00
No. 103—Tortoise Shell	.30	3.00	No. 106—Tortoise Shell	.35	4.00
No. 203—Finest Celluloid	.05	.50	No. 206—Finest Celluloid	.10	1.20

ADJUSTABLE GUITAR BRIDGES

	Each
No. 300—For all models of Epiphone Guitars	\$1.75
No. 301—For DeLuxe Guitar, gold fittings	2.75

ADJUSTABLE TENOR GUITAR BRIDGES

	Each
No. 400—For Beverly Model Tenor Guitar	\$1.75
No. 401—For all other Epiphone Models	1.75
No. 402—For Epiphone Empire Guitar, gold fittings	2.75

ADJUSTABLE MANDOLIN AND MANDOLA BRIDGES

	Each
No. 500—For all models of Epiphone Mandolins and Mandolas	\$1.75
No. 501—For Windsor Mandolin, gold fittings	2.75

CASES FOR GUITAR, TENOR GUITAR

AND PLECTRUM GUITAR

UTILITY BLACK KERATOL—FLEECE LINED

Concert Size	Price each \$7.50
Grand Concert Size	Price each 7.75
Auditorium Size	Price each 8.00

PROFESSIONAL 3-PLY VENEER CASES BLACK LEATHERETTE COVERING

	Fleece	Velvet	Plush
Concert Size for Olympic, Zenith, Beverly and Melody..	\$15.50	\$19.00	\$25.50
Grand Concert Size for Blackstone	16.50	20.00	26.50
Auditorium Size for Royal, Triumph, Regent and Hollywood	17.00	20.00	27.00
Grand Auditorium Size for Broadway and DeLuxe.....	18.00	21.00	29.50

MANDOLIN CASES

Utility, Black Keratol, Fleece Lined.....	\$5.50
---	--------

PROFESSIONAL 3-PLY VENEER CASES BLACK LEATHERETTE COVERING

Fleece Lined.....	Velvet Lined.....	Plush Lined.....
\$10.00	\$12.00	\$16.50

Mandola Cases Priced the Same as Mandolin.
Mando Cello Cases—Prices quoted on request.



THE FIVE MESSNER BROTHERS

A Premier Orchestra all in one Family. Artists over the air since 1924 over all the leading stations in the East. Heartily endorse Epiphone Banjos and Guitars.

Our Guarantee

MOST high-grade instruments are guaranteed against defects in material and workmanship for a specified period of time, but the Epiphone Guarantee is far more liberal.

The material, workmanship and intonation of all Epiphones are guaranteed *for the life of the instrument*. There is no time limit.

When you purchase an Epiphone you are taking no chances whatsoever, as every instrument not only possesses unequalled musical qualities, but is positively guaranteed to give long and satisfactory service.

EPIPHONE BANJO CORPORATION
LONG ISLAND CITY, N. Y.