

.3
HP



EPHONe
INSTRUMENT BUILDERS SINCE 1873

NEW YORK N.Y. U.S.A.

WORLD'S LARGEST FIRST GRADE INSTRUMENT BUILDERS

Foreword

MANY visitors in going through the EPIPHONE factory have been struck with the meticulous care with which the various operations entering into the building of EPIPHONE fretted instruments before they are ready for final inspection, are conducted. Amazement has been expressed in viewing tops and backs fully 1" thick being roughly carved on specially built machines, so that in turn true violin artisans may carve the beautiful curves that are evident on the face of the instrument and micrometrically graduate the thicknesses of top and back to pre-determined and scientific measurements.

One of the features of EPIPHONE instruments is the certainty that the necks will stay "put" and not warp. This is not accidental, but rather the result of correct materials and the EPIPHONE cantilever brace which counteracts the tension of the strings.

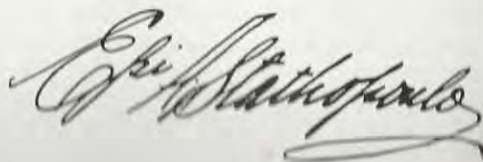
The finishes are the result of extensive research with wood finishing materials so that lasting and beautiful results are obtained.

A special hard nickel alloy is used for the frets, designed to give smooth and easy action and to stand up under constant usage.

EPIPHONE MASTERBILT strings are made in our own factory and are hand wound, thereby insuring perfect accuracy in gauge and intonation. They are made from materials especially evolved to give brilliant and lasting performance.

The purchaser of an EPIPHONE MASTERBILT instrument is assured that it is the finest obtainable by the lifetime guarantee which accompanies it.

EPIPHONE, Inc.



President

The EMPEROR



*The Ultimate
in
Evolution*



Highly Responsive



Feather-touch Action



New Solo Neck



*Scientifically
Hand
Graduated Top
and Back*



THE crowning achievement of EPIPHONE'S instrument building career is the EMPEROR . . . reigning sovereign of all first grade instruments.

The merest feather touch releases the vibrantly rich tone of this unusual guitar. The larger body size is evidence, alone, of the radical improvements represented in this instrument. It is fully 18½ inches wide, and 21¾ inches long. The top, carved and graduated from select vertical grained spruce, is matched with a carved curly maple back and curly maple sides, finished with rich sunburst on both, top and back, and highlighted sides blending into Cremona brown. Sound holes and edges are bound in alternate black and white pyralin. The neck is reinforced to prevent warpage and is made from highly flamed laminated maple, featuring a new type of heel where it joins the body so that greater ease is attained when playing in the upper register. The ovoid ebony fingerboard with high content nickel-silver frets and distinctive mother-of-pearl inlays complete the artistic ensemble. Satin and burnished gold engraved parts add the finishing touch to this strikingly beautiful instrument, even to the new compensating tailpiece. A substantial, good-looking case, covered with genuine cowhide leather, lined with finest silk plush and Zipper Mackintosh waterproof case cover are included in the price.....

\$400.00



The DE LUXE

- ★
- Larger
-
- Voiced with True Feeling
-
- More Volume
-
- Feather-touch Action
-
- Responsive
-
- New Solo Neck
-
- Scientifically Hand Graduated Top and Back
-

The BROADWAY

- ★
- Larger
-
- Distinction in Every Detail
-
- Finer Action
-
- Responsive
-
- Hand Carved Top and Back Scientifically Graduated
-



THE new DE LUXE, larger in size, measuring 20 $\frac{1}{4}$ inches in length, and 17 $\frac{3}{8}$ inches in width, is a finer edition of the model which has been selected by most professionals as the best. With the additional new features this model should prove more popular than ever.

A new narrow fingerboard enables the player to get all of the six string barre chords with ease.

The top is carved from select vertical grained spruce. The back is carved from curly maple with curly maple sides.

This model is finished in rich cremona brown with contrasting sunburst of yellow gold on back and top and highlighted sides.

The position marks on the genuine rosewood fingerboard are made of inlaid mother-of-pearl. Sound holes are edged with white pyralin. Edges of entire instrument bound with alternate white and black pyralin. All metal parts gold-plated. Reinforced neck and new compensating tailpiece. Price.....

\$275.00

CASES FOR THE DE LUXE

No. 885-P—Plush lined, professional model.....	\$27.00
No. 885-F—Fleece lined, professional model.....	20.00
No. 1800-P—Provencier plush lined.....	16.00
No. 1800-F—Provencier fleece lined.....	10.50

THE BROADWAY is also built with the new large body. It measures in length fully 20 $\frac{1}{4}$ inches and in width, 17 $\frac{3}{8}$ inches.

Carved, select spruce forms the graceful top. The sides, beautifully grained dark American walnut as well as the carved back are worked into an attractive, high finish. All metal fittings are gold-plated including the buttons on the tuning units. Mother-of-pearl inlays indicate the positions on the rosewood fingerboard. The entire instrument is accentuated, in its graceful outline, with alternate black and white pyralin. Re-inforced neck. Compensating tailpiece. Price.....

\$175.00

TENOR GUITAR . . . same design and description as given above, including dimensions. (Plectrum on order.) Price.....

\$175.00

CASES FOR THE BROADWAY

No. 885-P—Plush lined, professional model.....	\$27.00
No. 885-F—Fleece lined, professional model.....	20.00
No. 1800-P—Provencier, plush lined.....	16.00
No. 1800-F—Provencier, fleece lined.....	10.50



The TRIUMPH

- ★
- New Large Model*
-
- Experienced Craftsmanship*
-
- New Narrower Neck*
-
- Richer Toned*
-
- Scientifically Hand Graduated Top and Back*
-

THE TRIUMPH is built in the new large size—20¼ inches long and 17¾ inches at the widest part.

The top is carved from select spruce. The back is carved from curly maple with curly maple sides. The neck is made from carefully selected mahogany with mother-of-pearl inlaid fingerboard of South American Rosewood.

The entire instrument is finished in dark cherry with sunburst on top and back.

Nickel plated fittings. Reinforced neck. Compensating tailpiece.
Price **\$125.00**

TENOR GUITAR . . . same design and description as given above, including dimensions. (Plectrum on order.) Price..... **\$125.00**

CASES FOR THE TRIUMPH

No. 885-P—Plush lined, professional model.....	\$27.00
No. 885-F—Fleece lined, professional model.....	20.00
No. 1800-P—Pro-Veneer, plush lined.....	16.00
No. 1800-F—Pro-Veneer, fleece lined.....	10.50

The SPARTAN

- ★
- A Professional Model*
-
- Preserving a Tradition*
-
- Re-inforced Neck*
-
- Rich, Deep Tone*
-
- New Easy Action*
-
- Hand Carved Top Scientifically Graduated*
-



THIS Grand Auditorium Guitar measures 20¼ inches in length by 16¾ inches in width. Highly finished carved Spruce top, colored with yellow sunburst shading to cremona brown. Sides of rich walnut. The handsomely finished back is also walnut and the entire guitar is colored a rich vibrant brown. The extension tailpiece and other metal fittings are in polished nickel plate. Reinforced neck. The trained, professional musician will instantly recognize the superiority and richness of sound which the lightest touch releases from the SPARTAN. Price..... **\$100.00**

TENOR GUITAR . . . same size, design and description as above. (Plectrum on order.) Price..... **\$100.00**

CASES FOR THE SPARTAN

No. 884-P—Plush-lined professional model.....	\$25.00
No. 884-F—Fleece-lined professional model.....	19.00
No. 1800-P—Pro-Veneer Plush-lined	16.00
No. 1800-F—Pro-Veneer Fleece-lined	10.50



The
BLACKSTONE

- ★
- New and
Larger Size*
-
- Hand
Carved Top*
-
- Truly Professional*
-
- Fine Rich
Tone*
-
- Remarkable
Value*
-

THE NEW BLACKSTONE meets the modern demand for larger, more graceful instruments. It measures 20¼ inches in length by 16¾ inches in width. The top is carved from select spruce, rounded out gracefully to the curly maple sides. The back is also of curly maple and the entire guitar finished with a high, permanent lustre that only choice woods and workmanship can yield. All metal fittings are nickel-plated, set off in attractive contrast with the rich color of the wood. The tone will surprise and please the listener . . . it is as rich and vibrant as the artistic finish of the instrument. Price..... **\$75.00**

TENOR GUITAR . . . same description, design and dimensions as above. (Plectrum on order.) Price..... **\$75.00**

CASES FOR THE BLACKSTONE

No. 884-P—Plush-lined professional model.....	\$25.00
No. 884-F—Fleece-lined professional model.....	19.00
No. 1800-P—Pro-Veneer Plush-lined	16.00
No. 1800-F—Pro-Veneer Fleece-lined	10.50

The
ZENITH

- ★
- Grand
Auditorium
Size*
-
- Hand
Carved Top*
-
- Beautifully
Finished*
-
- Exceptional
Value*
-



THIS ever-popular model is now made to conform to the advanced styling in guitar sizes. The 20¼ inch length is matched by the full 16¾ inch width. The ZENITH is moderately priced, but the same skill and care which goes into the making of the other, higher priced EPIPHONE instruments is part of this guitar. The highly finished carved spruce top is sided and backed with walnut and finished with contrasting metal fittings. The tone yield of the ZENITH instantly places it in the category of the higher priced instruments while the price is surprisingly low. Price..... **\$50.00**

TENOR GUITAR . . . same size and description as above. (Plectrum on order.) Price..... **\$50.00**

CASES FOR THE ZENITH

No. 884-P—Plush-lined professional model.....	\$25.00
No. 884-F—Fleece-lined professional model.....	19.00
No. 1800-P—Pro-Veneer Plush-lined	16.00
No. 1800-F—Pro-Veneer Fleece-lined	10.50
No. 2503—Heavy Board, Keratol Covered, Fleece-lined.....	7.75



The OLYMPIC



*A Hand
Carved Top
Swelled-Back Guitar
with All
Professional
Features
at a
Remarkably
Low Price*



Fine Toned



*Beautifully
Finished*



THE Auditorium Size OLYMPIC measures 19¼ inches in length and 15¼ inches in width. The fullness and roundness of tone corresponds to the shape and beauty of the model. The neck, sides and back are of Mexican mahogany and the top is of fine spruce, carved to graceful, pleasing proportions. The skillful manner of finishing brings out the grain in all its natural beauty. The neck is re-inforced against warping, insuring a lifetime of undiminishing pleasing tone and service. Fittings are all contrastingly nickel-plated.

Price **\$35.00**

TENOR GUITAR . . . same description, size and design as above. (Plectrum on order.) Price..... **\$35.00**

CASES FOR THE OLYMPIC

No. 883-P—Plush-lined professional model.....	\$24.00
No. 883-F—Fleece-lined professional model.....	18.00
No. 1800 F—Pro-Veneer Fleece-lined	10.50
No. 2502—Heavy Board, Keratol Covered, Fleece-lined.....	6.50

The F.T. Seventy-five



*Scientifically
Graduated Flat
Top*



Deep Toned



*Exceptionally
Brilliant*



*The Choice of
the Artist*



*Extra Deep
Body*



THIS model is made in the latest professional "jumbo" size. It is 16½ inches wide, 20¼ inches long and 4¾ inches deep. The selected vertical grain spruce top is edged with contrasting black and white pyralin purfling and the sides and back, made of curly maple, are edged with heavy ivory pyralin. The neck is made of reinforced mahogany with a rosewood fingerboard joining at the fourteenth fret. The fingerboard is also bound with ivory pyralin. The finish is of a highly polished and hand-rubbed dark cherry encompassing the brilliant sunburst of the top. Price..... **\$75.00**

CASES FOR THE F. T. 75

No. 1800-P—Pro-Veneer Plush-lined	\$16.00
No. 1800-F—Pro-Veneer Fleece-lined	10.50
No. 2503—Heavy Board, Keratol Covered, Fleece-lined.....	7.75



The
F.T.
Twenty-seven



*Graduated
Flat Top*



*Specially
Braced for
Tone and
Strength*



*New Deep
Body*



The
MADRID
Hawaiian Guitar



*Round
Singing Tone*



*Pyralin Flush
Inlaid Frets*



*Extra Deep
Body*



HERE is a flat top guitar of unusual value, both in price and in quality. This handsome instrument is fully 19¼ inches in length, 14½ inches wide and 4½ inches deep. A hand-rubbed, high gloss finish starts with a sunburst on the grained spruce top and finishes off into a rich light brown of the Mexican mahogany sides and back. The neck is made of high grade mahogany, Rosewood fingerboard, joins the body at the fourteenth fret. The top edge is bound with contrasting ivory pyralin. Price.... **\$27.50**

The F. T. THIRTY-SEVEN . . . Larger in size than the Twenty-Seven, being 19¼ inches long, 15½ inches wide and 4½ inches deep. The top is of vertical grained spruce and the sides and back of American quartered walnut. The yellow sunburst finish on the top smooths off into the rich chocolate brown of the sides and back. Both the top and bottom edges are contrastingly bound with ivory pyralin. The neck is of mahogany with a rosewood fingerboard joining the body at the fourteenth fret. Price **\$37.50**

CASES FOR THE F.T. 27 AND F.T. 37

No. 1800-P—Pro-Veneer Plush-lined	\$16.00
No. 1800-F—Pro-Veneer Fleece-lined	10.50
No. 2501—For F.T. 27, Heavy Board, Keratol Covered, Fleece-lined.....	5.00
No. 2502—For F.T. 37.....	6.50

THIS attractive model is made in the extra large, "jumbo" size. 16½ inches wide and 20¾ inches long. It is especially constructed to yield the singing Hawaiian tone so much in demand. Smooth action is facilitated by the specially made celluloid fret marks. Vertical grain spruce top, curly maple sides and back. Neck joins body at the twelfth fret. Top and back are finished with the sunburst design and the edges and sides rich dark cherry. Price..... **\$90.00**

The NAVARRE Hawaiian Guitar . . . This model is made in the extra large, "jumbo" size for maximum tone value. 16½ inches wide and 20¾ inches long. Vertical grain spruce top, sides and back of Mexican mahogany. The top is especially reinforced for full tone strength and value. Reinforced mahogany neck with rosewood fingerboard is inlaid with celluloid frets that do not protrude beyond the smooth surface. Easy action is thus insured. Price..... **\$50.00**

CASES FOR THE MADRID AND NAVARRE GUITARS

No. 1800-P—Pro-Veneer Plush-lined	\$16.00
No. 1800-F—Pro-Veneer Fleece-lined	10.50



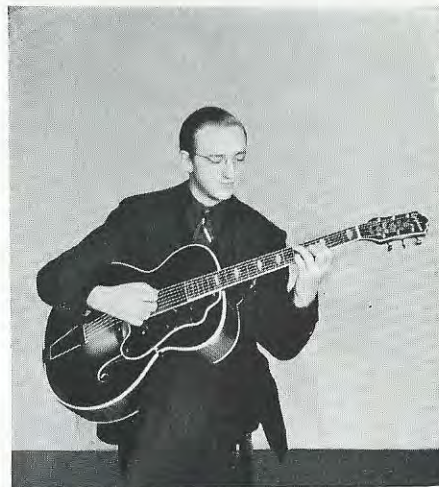
SAMMY FRIEDMAN

Balaban & Katz House Orchestra, Chicago



DICK McDONOUGH

Radio and Record Artist, New York



GEORGE VAN EPS

Featured Soloist, Ray Noble Orchestra, N. Y.
Prize winning Sweet Band



ANDREW BURR

Teacher of Van Eps Method



A. J. THOMAS

Will Ryshanek Orchestra, Teacher,
Pittsburgh, Pa.



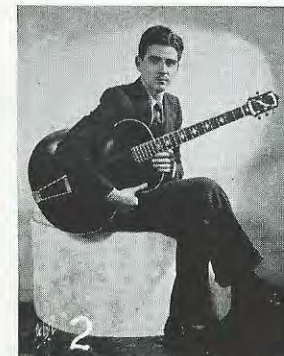
MAX CHEIKES

Joe Haymes Orchestra, N. Y.



KING HARVEY

On Tour, Herbie Kay Orch.



PAT SAMMARCO

Teacher, Poughkeepsie, N. Y.



BRUCE "JUNIE" ANDERSON

Eddie Duchin Orchestra



MIKE POVEROMO

Dick Stabile Orchestra,
En route



CHARLES COVERT

Lincoln Point Inn
Trenton, N. J.



CHARLES KOFF

Arranger, Guitarist,
Paramount Studios, N. Y.



TONY SACCO

Joe Venuti and
Eric Madriquera Orchestras



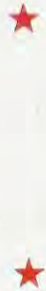
JACK ANDERSON

Art Randall's Orchestra,
Omaha, Neb.



NEWT MOSS

Teacher, Hartford, Conn.



TOM ANTONE

Glen Gilmore's Orchestra, Soloist and Teacher, Long Beach, Calif.



ALLEN REUSS

Benny Goodman's Orchestra, Prize winning Swing Band



BOOF TURNER (right)

Johnny Green's Orchestra Radio and Tours

DAVE BARBOUR (left)

Lennie Hayton Orchestra, Radio



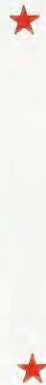
FRANK D'AMATO

Teacher and leading guitarist of New Haven, Conn.



ARTHUR SWANSON

With show "Anything Goes"



FRED CLARK

Charles Dornberger Orchestra, Paradise Rest., N. Y. C.



CHAS. GALLANTE

At the mike with Ted Black's NBC Orchestra



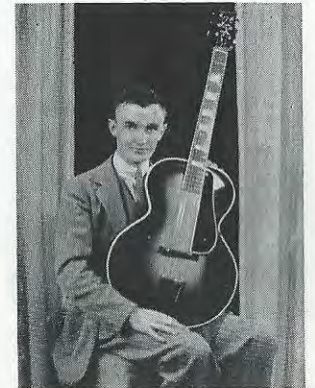
HARRY BIGLEY

Well known Pittsburgh artist



BUDDY REED

Juvenile soloist. Radio and Vaudeville



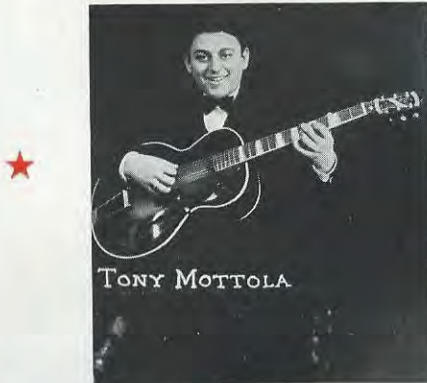
JACK SKILES

17-year-old guitarist and leader. Plays Crazy Crystal Program NBC. Mineral Wells, Texas



LARRY HALL

Russ Morgan Orchestra



TONY MOTTOLA

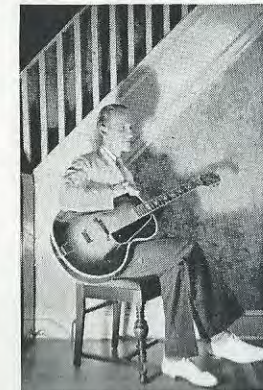
TONY MOTTOLA

Station Orchestra, WAAT, Jersey City, N. J.



HAROLD STOUT

Popular artist, Ft. Wayne, Ind.



GEORGE D. YEATMAN

Ace guitarist from Baltimore, Md.

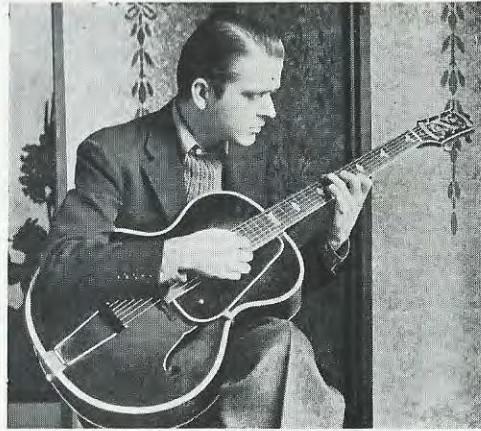


MRS. D. C. CLARK

Famous Teacher and Soloist, Dayton, Ore.



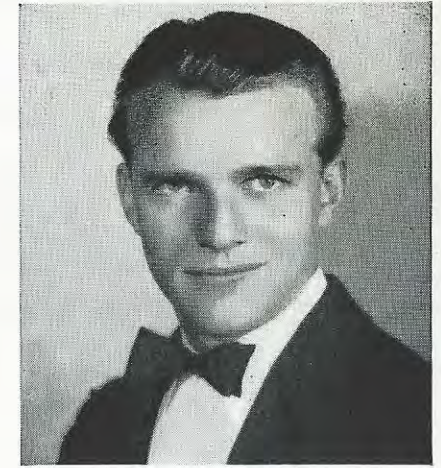
SMILEY BURNETT
Star of feature picture,
"Guns and Guitars"



GARRETT McADAMS
Louis Prima Ork at the Famous Door,
Los Angeles, Calif.



CARMEN MASTREN
Tom Dorsey Band



RUSS SOULE
Guitarist with Pinky Tomlin Orchestra



BOB RICE
Geo. Olsen Ork



JOHNNY MARVIN
"Lonesome Singer of the Air"
NBC Network



ROY BECKER
Soloist, Milwaukee, Wis.



JOSEPH LOPEZ
Leading Teacher and Organizer
of Eastern Pennsylvania



NORTHAMPTON, PA., GROUP
Juvenile Girl Orchestra, organized by
Mr. Lopez



DON HOSACK
Radio Station KVOO, NBC
Network, Tulsa, Okla.



EMIL ALEXANDER
Charles' Park Ave, Orchestra,
N. Y.



AL "JOSE" MASON
Frolie Club Ork,
San Francisco, Calif.



NORTHAMPTON, PA., BOYS ORCH.
A popular boys' group organized by Mr. Lopez



HAZELTON, PA., PLECTRUM ENSEMBLE
Another of Mr. Lopez's groups



FRANK KLINGER

With Charles Barnet Ork.,
Glen Island Casino, N. Y.



LEW GREEN

Popular New York guitarist with
Ferde Grofe Orchestra



ARTHUR ENS

With Riley and Farley of "Music Goes
Round and Round"



HILTON LAMARE

One of New Orleans famous guitarists
with Bob Crosby Orchestra



GEORGE PATRICK

Star soloist and teacher of many well
known artists, Milwaukee, Wis.



JOE SILVA

Popular artist, Minneapolis, Minn.



MICKY ANDREWS

With Jimmy Monaco's Band,
Roadside Rest, L. I.



BUD WEAVER

Popular soloist and teacher,
St. Paul, Minn.



BUNNY RANG

Steve Matthews Swing Band,
Pittsburgh, Pa.



BERNIE SCHERER

With Art Kahn's Casino Montclair
Orchestra, N. Y.



JIMMY HELLAND

Well known instructor, Milwaukee, Wis.



JOE SPINALE

A well known New England Artist,
Everett, Mass.



WILLIAM CHUHKA

Popular Hazelton, Pa., artist

EPIPHONE MANDOLINS

WINDSOR

A MANDOLIN of unusual tone quality especially made for concert work. In materials, workmanship and finish, there is nothing finer.

Its hand carved top of extra selected close grained spruce, bound with alternate white, black, white ivoroid, its beautifully flamed hand carved curly maple back similarly bound and curly maple sides to match, create a most pleasing ensemble. F sound holes. Curly maple neck with three ply inlay in center joins the body at the fifteenth fret. Genuine ebony extension fingerboard suitably inlaid with mother-of-pearl position marks. Peg-head inlaid with mother of pearl of individual design. Adjustable bridge.

The entire instrument finished in rich Cremona brown with the center of top and back, the neck and parts of the sides high-lighted in orange yellow. The instrument is finished in hand-rubbed lacquer. All metal parts gold plated. Price..... **\$200.00**

Case extra.

No. 431-SP—Plush-lined, Professional Model\$16.50

ARTIST

IN form similar to the WINDSOR model. In quality and workmanship a fitting companion equal to any artist's demands.

The top of selected straight grained spruce, carved and graduated, bound with white ivoroid. F sound holes. Carved back and sides of finest Northern curly maple, white ivoroid binding. Mahogany neck, ebony fingerboard, ornate pearl position marks and bound with white ivoroid. Peg-head pearl inlaid. Adjustable bridge.

STRAND
\$75



STRAND

AN INSTRUMENT of distinction and fine beauty of tone. Its acclaim by many professionals places it amongst the most popular mandolins made.

The top is made of select grained spruce, carved and graduated. F sound holes. Alternate white, black, white ivoroid binding. Adjustable bridge. Back and sides finest American Walnut. Back carved and bound with white ivoroid binding. Mahogany neck, rosewood fingerboard bound with white ivoroid, pearl position marks, peg-head inlaid with pearl. Finished in deep brown with top, back and sides high-lighted. All metal fittings polished nickel. Price **\$75.00**

Case extra.

No. 431-SP—Plush-lined, Professional Model\$16.50

No. 428-F—Fleece-lined, Professional Model 10.00



WINDSOR
\$200

Finished in deep red with golden sunburst on top, back and sides, thereby bringing out the beautiful grained figures of the wood. All metal parts nickel-plated. Price **\$150.00**

Case extra.

No. 431-SP—Plush-lined, Professional Model\$16.50

No. 428-F—Fleece-lined, Professional Model 10.00

EPIPHONE MANDOLINS

RIVOLI

THE tone of the RIVOLI is large and brilliant with plenty of volume and carrying power for either stage, radio or dance work. Similar in shape and size to the Adelphi.

The top carved from selected spruce, ivoroid binding. Sides and back of Walnut. F sound holes. Mahogany neck, rosewood fingerboard, pearl position marks. Adjustable bridge.

Finished in walnut brown with the top high-lighted in the center. A beautiful instrument for all around playing. Price **\$50.00**

Case extra.

No. 431-SP—Plush-lined, Professional Model\$16.50

No. 428-F—Fleece-lined, Professional Model 10.00

No. 2519—Lorraine Case, Hard Black Keratol.... 4.50

ADELPHI

ADELPHI model presents unusual value for such a fine instrument. Its qualities should not be judged by its inexpensiveness.

The carved spruce top is graduated and bound with white ivoroid. F sound holes. Sides and back made of maple. The back is bound with ivoroid. Adjustable bridge.

Mahogany neck, rosewood fingerboard, pearl position marks. The finish of the instrument is a deep red with yellow sunburst on top and back. All fittings polished nickel. Price **\$35.00**

Case extra.

No. 431-SP—Plush-lined, Professional Model..\$16.50

No. 428-P—Fleece-lined, Professional Model.. 10.00

No. 2519—Lorraine Case, Hard Black Keratol 4.50

MANDOLAS

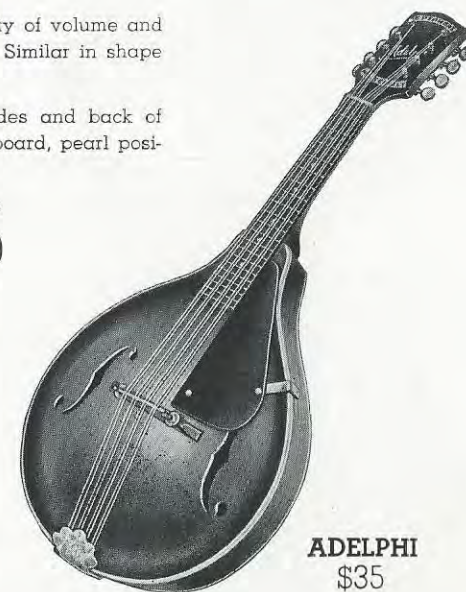
THIS is the "Viola" of the Mandolin family.

Many prefer the Mandola to the Mandolin for solo work and in the home because of its deep, rich tone and its faculty of blending with the human voice, as well as with Guitar or Piano.

Materials and construction are the same as in the Mandolins of the same names.

WINDSOR MANDOLA	\$200.00
ARTIST MANDOLA	150.00
STRAND MANDOLA	90.00
RIVOLI MANDOLA	65.00
ADELPHI MANDOLA	50.00

Cases Priced 20% above Mandolin Cases.



ADELPHI
\$35

MANDO-CELLOS

CORRESPOND, in musical effect, to the Cello of the orchestra. EPIPHONE Mando-Cellos are made with the same meticulous care which is employed in the construction of our other instruments. Tops are of the same high quality spruce and are always carved to shape as are those of our guitars, mandolins, etc. The purchaser of an EPIPHONE Mando-Cello has an instrument of which he may well be proud.

No. 1.—Similar in construction to Blackstone	
Guitar	\$ 95.00
No. 2.—Similar to Triumph Guitar	150.00
No. 3.—Similar to De Luxe Guitar	275.00

Cases priced similar to Guitar cases for model named.

EPIPHONE STRINGS

"The Strings with the Golden Tone"

EPIPHONE MASTERBILT Strings are made from scientifically gauged and selected materials. The plain strings are non-tarnishing and combine the maximum of tone with long wearing qualities. All MASTERBILT strings are wound by hand assuring the player of a tight wrap and the best in intonation. They are especially designed for use with EPIPHONE MASTERBILT Guitars and improve the tone of any other make instrument.



GUITAR STRINGS made in Heavy Gauge (which is supplied with our instruments) and Light Gauge

Ball Ends		Per Dozen	Gross Price	Gross Prices Apply on
E or 1st	Finest grade chrome steel, silverplated	\$1.20	\$12.00	1/2 gross
B or 2nd	Finest grade chrome steel, silverplated	1.20	12.00	1/2 gross
B or 2nd	Special bronze wound on steel	1.70	17.00	1/3 gross
G or 3rd	Finest grade chrome steel, silverplated	1.20	12.00	1/2 gross
G or 3rd	Special bronze wound on steel	1.80	18.00	1/3 gross
D or 4th	Special bronze wound on steel	2.00	20.00	1/3 gross
A or 5th	Special bronze wound on steel	2.40	24.00	1/3 gross
E or 6th	Special bronze wound on steel	3.50	35.00	1/3 gross
	Sets with plain B or 2nd.....	1.10 per set	11.00 per dozen sets	
	Sets with wound B or 2nd.....	1.15 per set	11.50 per dozen sets	

GUITAR STRINGS—Hand Polished Heavy Gauge

Ball Ends				
E or 1st	Finest grade chrome steel, silverplated	\$1.20	\$12.00	1/2 gross
B or 2nd	Finest grade chrome steel, silverplated	1.20	12.00	1/2 gross
B or 2nd	Special bronze wound on steel	2.75	27.50	1/3 gross
G or 3rd	Special bronze wound on steel	2.90	29.00	1/3 gross
D or 4th	Special bronze wound on steel	3.05	30.50	1/3 gross
A or 5th	Special bronze wound on steel	4.00	40.00	1/3 gross
E or 6th	Special bronze wound on steel	5.45	54.50	1/3 gross
	Sets with plain B or 2nd.....	1.50 per set	15.00 per dozen sets	
	Sets with wound B or 2nd.....	1.65 per set	16.50 per dozen sets	

HAWAIIAN GUITAR STRINGS—Hand Polished

Ball Ends				
1st	Finest grade chrome steel, silverplated	\$1.20	\$12.00	1/2 gross
2nd	Finest grade chrome steel, silverplated	1.20	12.00	1/2 gross
3rd	Finest grade chrome steel, silverplated	1.25	12.50	1/2 gross
3rd	Special bronze wound on steel	2.90	29.00	1/3 gross
4th	Special bronze wound on steel	3.05	30.50	1/3 gross
5th	Special bronze wound on steel	4.00	40.00	1/3 gross
6th	Special bronze wound on steel	5.65	56.50	1/3 gross
	Sets with Plain G or 3rd.....	1.50 per set	15.00 per dozen sets	
	Sets with wound G or 3rd.....	1.65 per set	16.50 per dozen sets	

TENOR OR PLECTRUM GUITAR STRINGS

Ball Ends				
A or 1st	Finest grade chrome steel, silverplated	\$1.20	\$12.00	1/2 gross
D or 2nd	Finest grade chrome steel, silverplated	1.20	12.00	1/2 gross
G or 3rd	Special Bronze wound on steel.....	1.80	18.00	1/3 gross
C or 4th	Special Bronze wound on steel.....	2.00	20.00	1/3 gross
	Set of four .60	Dozen sets 6.00		

TENOR OR PLECTRUM BANJO STRINGS

Loop End				
1st	Finest grade chrome steel, silverplated	\$1.20	\$12.00	1/2 gross
2nd	Finest grade chrome steel, silverplated	1.20	12.00	1/2 gross
3rd	Special bronze wound on steel	1.80	18.00	1/3 gross
4th	Special bronze wound on steel	2.00	20.00	1/3 gross
	Set of four .60	Dozen sets 6.00		

ELECTAR STRINGS—Special Composition for Electric Guitars Hand Polished for Guitar or Hawaiian Guitar

Ball Ends		Per Dozen	Gross Price	Gross Prices Apply on
1st	Plain	\$1.20	\$12.00	1/2 gross
2nd	Plain	1.20	12.00	1/2 gross
2nd	Wound	2.75	27.50	1/3 gross
3rd	Plain	1.25	12.50	1/2 gross
3rd	Wound	2.90	29.00	1/3 gross
4th	Wound	3.05	30.50	1/3 gross
5th	Wound	4.00	40.00	1/3 gross
6th	Wound	5.65	56.50	1/3 gross
	Sets Hawaiian with plain 2nd and 3rd.....	1.50 per set	15.00 per doz. sets	
	Sets Guitar with plain 2nd and wound 3rd.....	1.65 per set	16.50 per doz. sets	

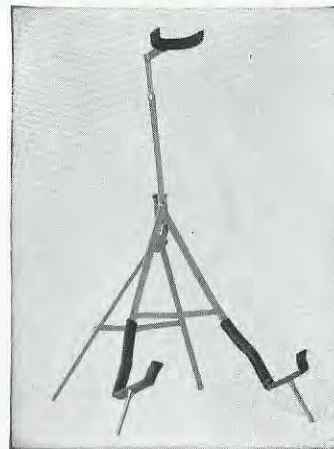
MANDOLIN STRINGS

Loop End		Per Dozen	Gross Price	Gross Prices Apply on
E or 1st	Finest grade chrome steel, silverplated	\$1.20	\$12.00	1/2 gross
A or 2nd	Finest grade chrome steel, silverplated	1.20	12.00	1/2 gross
D or 3rd	Special bronze wound on steel	1.60	16.00	1/3 gross
G or 4th	Special bronze wound on steel	1.90	19.00	1/3 gross
	Set of eight 1.10	Dozen sets 11.00		

MANDOLA STRINGS

Loop Ends		Per Dozen	Gross Price	Gross Prices Apply on
A or 1st	Finest grade chrome steel, silverplated	\$1.20	\$12.00	1/2 gross
D or 2nd	Special bronze wound on steel	1.70	17.00	1/3 gross
G or 3rd	Special bronze wound on steel	2.20	22.00	1/3 gross
C or 4th	Special bronze wound on steel	2.50	25.00	1/3 gross
	Set of eight 1.50	Dozen sets 15.00		

EPIPHONE INSTRUMENT STANDS



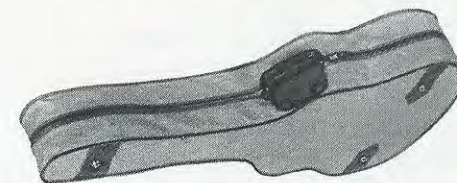
Strong, rigid, and equipped with rubber-shod feet to prevent marring polished floors or slipping.

Holders are of the cradle type, padded to protect the instrument.

Epiphone Single Stand, for Guitar	\$ 3.00
Epiphone Double Stand for Guitar and Banjo	8.50
Epiphone Triple Stand for Guitar, Banjo and Violin	10.75

CASE COVERS

To Protect Your Instrument



A WATERPROOF Mackintosh, Fleece-lined cover is the finest protection for your instrument against atmospheric changes. Covers may be purchased at the time your instrument is ordered from the factory. These are Custom Made and greatly enhance the appearance of your outfit.

For 884 cases, Imitation Leather Binding..\$15.00

For 885 cases, Imitation Leather Binding.. 17.50

For 884 cases, Heavy Mackintosh, Genuine Leather Binding 18.00

For 885 cases, Heavy Mackintosh, Genuine Leather Binding..... 22.50

ACCESSORIES

PICK GUARDS FOR GUITARS AND TENOR GUITARS

- Each
- No. 999—De Luxe and Emperor shell pyralin triple edging and gold-plated angle holders **\$5.00**
- No. 1000—For Broadway, shell pyralin, white edging and gold-plated angle holders..... **4.50**
- No. 1001—For other EPIPHONE Guitars and for Tenor Guitars, nickel-plated angle holders **2.50**

PICK GUARDS FOR MANDOLINS

- Each
- No. 1003 — For Windsor Mandolins, white edging and gold-plated angle holders..... **\$3.50**
- No. 1004 — For other EPIPHONE Mandolins, nickel-plated angle holders **1.50**

PICK GUARDS FOR MANDOLAS

- Each
- No. 1005 — For Windsor Mandolas, white edging and gold-plated angle holders..... **\$3.50**
- No. 1006 — For Strand, Rivoli and Adelphi Mandolas, nickel-plated angle holders..... **1.50**

FRETS

- Frets as used on EPIPHONE Guitars, set of 20 **\$1.50**
- Frets for Tenor Guitars, set of 20 **1.20**
- Frets for Mandolins, set of 20 **1.20**
- Frets for Mandolas, set of 20 **1.20**
- Frets for Mandocellos, set of 20 **1.50**

MANDOLIN TAIL PIECES

- Each
- No. 220—With slide cover, nickel-plated..... **\$0.75**
- No. 221—With slide cover, nickel-plated and hand engraved **1.00**
- No. 222—With slide cover, gold-plated and hand engraved **2.00**

TAIL PIECES FOR 6 STRING GUITAR

- Each
- No. 215—Nickel-plated **\$1.75**
- No. 216—Gold-plated, same style **3.75**
- No. 217—New model large size, N.P..... **3.00**
- No. 218—New model large size, G.P..... **5.50**
- No. 219—For Emperor **8.50**

TAIL PIECES FOR TENOR GUITAR

- Each
- No. 315—Nickel-plated **\$1.75**
- No. 316—Gold-plated **3.75**

GUITAR PATENT HEADS

Made especially for EPIPHONE Guitars and other instruments and designed for long service.

- No. G13—For Six-String Guitar, nickel-plated, per pair **\$1.50**
- No. G213—For Tenor Guitar, N.P., per pair..... **1.50**

INDIVIDUAL GUITAR TUNING UNITS

- Each
- No. 413—Nickel-plated, ivory buttons, per set **\$4.80**
- No. 513—Nickel-plated, metal buttons, per set **6.00**
- No. 613B — Gold-plated, metal buttons, per set **15.00**

MANDOLIN PATENT HEADS

- No. M13—Nickel-plated, per pair **\$1.80**
- No. M23 — Nickel-plated and engraved, per pair **2.50**
- No. M23G—Gold-plated and engraved, with metal buttons, per pair **5.00**

ADJUSTABLE GUITAR BRIDGES

- Each
- No. 300 — For Broadway, De Luxe and Emperor Model Guitars, gold-plated fittings..... **\$2.75**
- No. 301—For other EPIPHONE Guitars **1.75**
- No. 302—Bridge top, notched for strings, for 300 and 301 bridges **.75**

ADJUSTABLE TENOR GUITAR BRIDGES

- Each
- No. 400—For Tenor Guitar **\$1.75**
- No. 401—With gold fittings **2.75**
- No. 402—Bridge top for above, notched for strings **.75**

ADJUSTABLE MANDOLIN AND MANDOLA BRIDGES

- Each
- No. 500—For all models of EPIPHONE Mandolins and Mandolas **\$1.75**
- No. 501—For Windsor Mandolin, gold fittings **2.75**
- No. 502—Bridge top for above, notched for strings **.75**

ACCESSORIES FOR FLAT TOP GUITARS

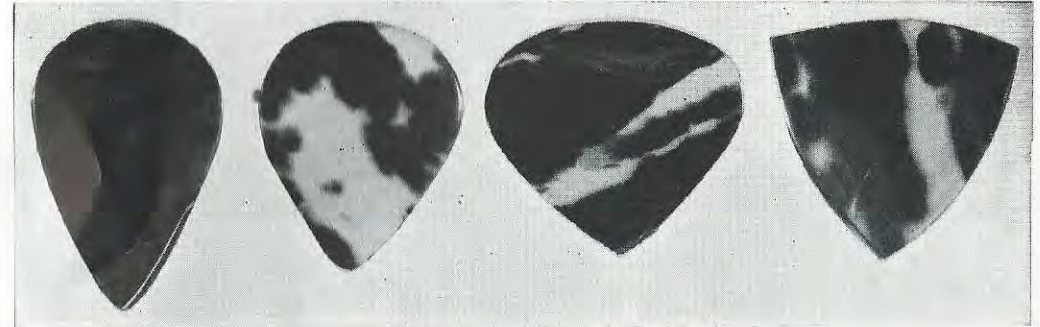
- Each
- No. 600—Guitar Bridges for flat top Guitars, finely finished in Brazilian Rosewood, offset ebony saddle **\$0.50**
- No. 601—Guitar Bridges for Hawaiian Guitars, Brazilian Rosewood ebony saddle.... **1.00**
- No. 602—Ivoroid Bridge Pins **.10**
- No. 603—Ivoroid Guitar End Pins **.20**

ADJUSTING HAWAIIAN GUITAR NUT SADDLE

- Each
- No. 604—The "Perfect" adjusting nut for converting regular to Hawaiian style guitar.... **\$0.50**

Mandolin, Banjo & Guitar Picks

THESE nine popular styles of picks (illustrated actual size) are furnished both in genuine tortoise shell and finest grade celluloid. They are hand made with smoothly polished beveled edges. Uniform in size and quality.



S308
C408

S309
C409

S310
C410

S311
C411

	Doz.	Gross		Doz.	Gross
S308—Tortoise Shell	\$3.00	\$30.00	S310—Tortoise Shell	\$3.50	\$35.00
C408—Finest Celluloid	.60	6.00	C410—Finest Celluloid	.75	7.50
S309—Tortoise Shell	3.00	30.00	S311—Tortoise Shell	3.50	35.00
C409—Finest Celluloid	.60	6.00	C411—Finest Celluloid	.75	7.50



S312
C412

S313
C413

S314
C414

S315
C415

S316
C416

	Doz.	Gross		Doz.	Gross
S312—Tortoise Shell	\$1.80	\$18.00	S314—Tortoise Shell	\$2.10	\$21.00
C412—Finest Celluloid	.45	4.50	C414—Finest Celluloid	.45	4.50
S313—Tortoise Shell	2.75	27.50	S315—Tortoise Shell	1.80	18.00
C413—Finest Celluloid	.45	4.50	C415—Finest Celluloid	.45	4.50

S316—Tortoise Shell	Doz. \$2.40	Gross \$24.00
C416—Finest Celluloid	Doz. .45	Gross 4.50

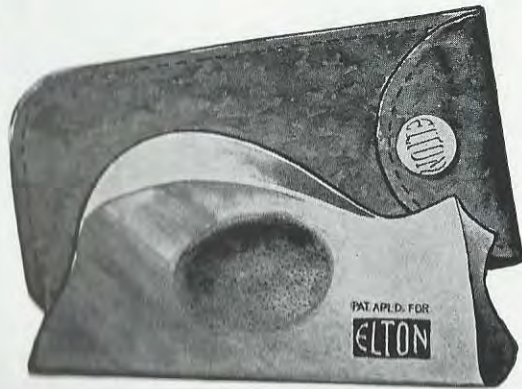
HAWAIIAN GUITAR BARS

THE EPI-ROCCO BAR

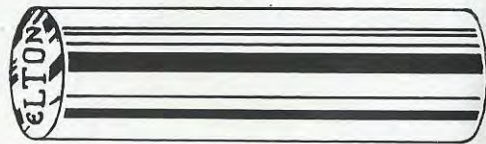


No. 700\$2.50 each

THIS is a new bar developed in conjunction with Anthony Rocco, famous steel guitarist. It fills the need of the modern Hawaiian guitarist. It is designed for use on both sides. The metal side for the conventional wooden instrument, and the wooden side for the amplified instrument. The metal part is made from a special hard alloy, chromium plated. The wooden side is made from a self lubricating wood of long wearing quality. This bar reduces to a minimum the disagreeable "swish" noticed when using other bars. In use by all well known artists.



No. 701—The Elton Professional Steel. Highly polished bronze\$1.00 each



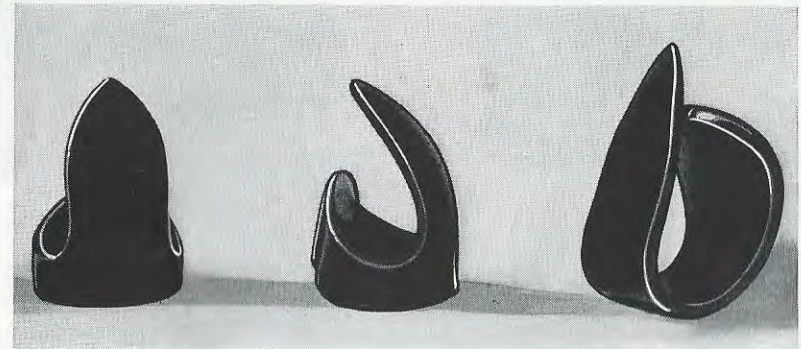
No. 702—Elton Round Steel. Highly polished brass. $\frac{5}{8}$ inch diameter. $2\frac{3}{4}$ inches long\$0.50 each

No. 703—Elton Round Steel. Highly polished brass. $\frac{3}{4}$ inch diameter. 3 inches long\$0.75 each

HAWAIIAN GUITAR PICKS

KEALOHA PROFESSIONAL HANDMADE PICKS

THESE picks are custom made, resulting in that comfortable feel which aids the artist in properly executing the fastest passages. The fingerpicks are of a patented design with the loop entirely encircling the finger and yet adjustable. They are made from a special composition assuring long wear.



704

705

No. 704—Kealoha Fingerpick\$0.50 each
No. 705—Kealoha Thumbpick25 each
No. 706—Kealoha Picks, set of 3 1.25 per set



707

No. 707—Celluloid Thumbpick 1.00 doz.



708

No. 708—Celluloid Fingerpick 1.00 doz.



709

No. 709—Polished Steel Thumbpick .75 doz.



710

No. 710—Polished Steel Fingerpick.. .75 doz.



TOMMY SAUCHELLI
With Reggie Childs Orchestra



SAL LOTA
Popular artist and teacher,
Paterson, N. J.



CLIFF PASCARELLA
Guitarist, WINS, N. Y.



JAMES GAYLORD
Station guitarist, WSUN,
St. Petersburg, Fla.



LARRY JONES
One of New England's stars,
Manchester, N. H.



JIMMIE LUNCEFORD ORCHESTRA
Featuring Al Norris and his Epiphone



CLAUDE HOPKINS ORCHESTRA
Featuring Joe Jones and his Epiphone

Guarantee

**Every EPIPHONE Instrument
is Guaranteed for Life**

EPIPHONE Instruments are guaranteed to the original purchaser for their lifetime instead of the usual thirty, sixty or ninety days, *providing the guarantee card accompanying every instrument is sent in to us properly filled out.* Any defect which may develop during the life of the instrument will be made good without delay. Metal and other parts that receive wear excepted.

It takes more than confidence to write a guarantee like this—it requires an intimate knowledge of design, materials and workmanship which make up EPIPHONE Instruments.

Any EPIPHONE Instrument sent to us under the terms of this guarantee must be prepaid.

This guarantee is valid only when our instruments are purchased through our authorized dealers.

E. A. STATHOPOULO,
President.

EPIPHONE INC.
New York, N. Y., U.S.A.

Sold Throughout the World.

Prices subject to change without notice.

Printed in U. S. A.